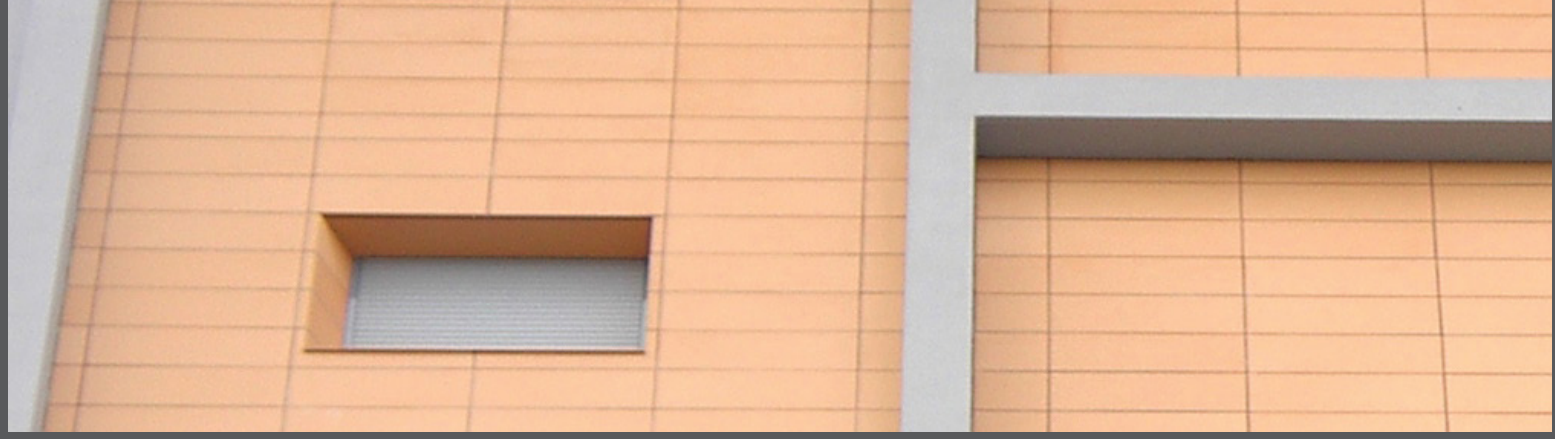




S
KIN

INSPIRED BY NATURE

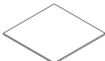
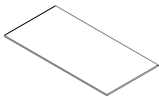
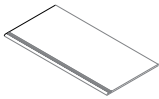
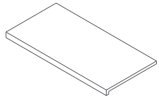
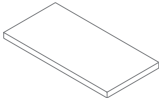





FLOOR AND WALL TILES

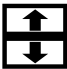








SKIN's extruded ceramic floor and wall tiles have a 12 mm width. SKIN can be used both in interiors and exteriors, combining perfectly with contemporary architecture. It's natural and organic tile pieces come in large formats, depending on each project SKIN can be produced in superior formats if needed.

All SKIN products are naturally protected; floor tiles with oil repellent treatment and wall tiles with hydro repellent treatment.

FORMATS		SIZES	THICKNESS
	SQUARE FLOOR / WALL TILES	600x600 MM 500x500 MM	12 MM
	RECTANGULAR FLOOR / WALL TILES	1200x600 MM 1000x500 MM 900x300 MM 600x300 MM	12 MM
	STEP	1200x600 MM 1200x300 MM 1000x500 MM 1000x300 MM 900x300 MM 600x300 MM 600x600 MM 500x500 MM	12 MM
	STEP EXTRA THICK	1200x600 MM 1200x300 MM 1000x500 MM 1000x300 MM 900x300 MM 600x600 MM 600x300 MM 500x500 MM	12 MM
	STEP EXTRA THICK CORNER* *RIGHT OR LEFT	1200x600 MM 1200x300 MM 1000x500 MM 1000x300 MM 900x300 MM 600x600 MM 600x300 MM 500x500 MM	12 MM
	SKIRTING	1200x100 MM 1000x100 MM 900x100 MM 600x100 MM 500x100 MM	12 MM

NON STANDARD DIMENSIONS, ON REQUEST AND MINIMUM ORDER.
 HEIGHT: MINIMUM 200 MM / MAXIMUM 600 MM
 LENGTH: MINIMUM 400 MM / MAXIMUM 1500 MM

TECHNICAL FEATURES

TECHNICAL FEATURES	NORMS	SKIN
 LINEAR THERMAL EXPANSION COEFFICIENT	NP EN ISO 10545 - 8	$< 6,5 \times 10^{-4} \text{ } ^\circ\text{C}$
 THERMAL SHOCK RESISTANCE	NP EN ISO 10545 - 9	PASSED
 FROST RESISTANCE	NP EN ISO 10545 - 12	PASSED
 FLEXION RESISTANCE	NP EN ISO 10545 - 4	26,4N/mm ²
 SURFACE HARDNESS (MOHS SCALE)	EN 101	8
 CHEMICAL RESISTANCE	NP EN ISO 10545 - 13	UA, UHA
 WATER ABSORPTION	NP EN ISO 10545 - 3	4,9%
 DEEP ABRASION RESISTANCE	NP EN ISO 10545 - 6	$< 400 \text{ mm}^3$
 SLIPPING RESISTANCE	DIN 51097 DIN 51130	C R11

IMPORTANT NOTE: Soladrilho's tiles are produced with natural clays and through an extrusion process, which can create slight differences in shades; sizes and textures between tiles; lots and tile accessories.

When applying tiles, alternate tiles and different tile boxes (from the same lot) in order to obtain a homogeneous surface without shade differences. Tiles should always be applied with the marks "»»" (located on the back of the tile) positioned in the same direction, because if differences between shades, sizes or roughness are visible this technique will reduce the unwanted appearance. Floor tiles should be placed with cement glue. Additional cuts should be made with an electrical cutting machine (water cutting machine) to obtain a regular cut.

Joint between tiles should have a 4 mm width; we don't recommend the use of crosspieces.

When applying tiles it is necessary to create a joint perimeter of at least 10 mm, which helps absorb all tensions created by the building's structure. This protects floor tiles from lifting because there is no direct transmission to the floor tiles; avoiding the floor tiles from lifting. A correct filling of the joints is key to a good finish; therefore we don't recommend the application of colored fillings, for example black, anthracite or graphite.



COLORS

Standard Colors



red 01



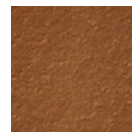
salmon 04



champagne 03



sevilha 07



chocolate 08



moca 09



chino 11



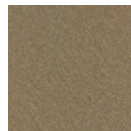
sand 05



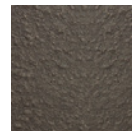
ocher 06



soft grey 12



medium grey 13



dark grey 14



anthracite 15

Non Standard Colors

*Depending on each project FACE can be produced with non standard colors or different finishes such as, glossy or textured.

IMPORTANT NOTE: Face tiles are produced with natural clays and through an extrusion process, which can create slight differences in shades; sizes and textures between tiles; lots and tile accessories.

When applying Face tiles, alternate tiles and tile boxes (from the same lot) in order to obtain a homogeneous surface without shade differences.

S
KIN